

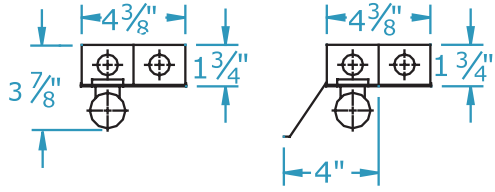
Staggered Strip Series

2' 3' & 4' 1 LAMP 3" OFFSET

Dimensions

Dimensions are subject to change.
Consult factory for verification.
All configurations/options may not be shown.

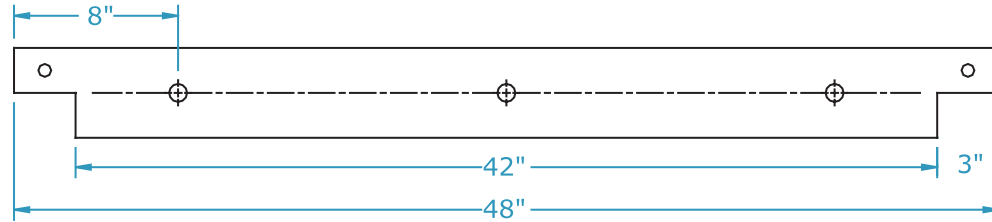
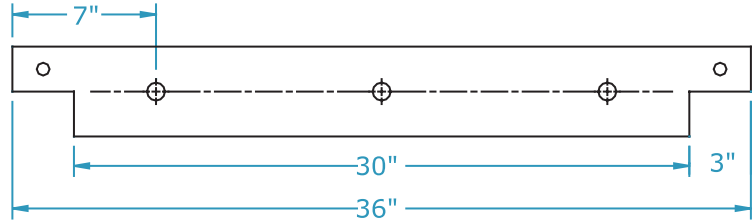
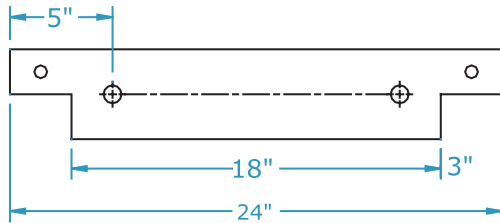
End View



Back View

Asymmetrical Reflector

○^{5/8} K.O. ⊕^{7/8} K.O.



Ordering Information

Catalog #	No & Lamp Type	O/A Length	O/A Width	O/A Depth	Wt.
ST-117 XV	1-F17T8	24"	4 3/8"	3 7/8"	4 1/4
ST-125 XV	1-F25T8	36"	4 3/8"	3 7/8"	5 1/2
ST-132 XV	1-F32T8	48"	4 3/8"	3 7/8"	6 1/4
ST-T2-25-6 XV#	2-F25T8	69"	4 3/8"	3 7/8"	10 3/4
ST-T3-25-9 XV#	3-F25T8	102"	4 3/8"	3 7/8"	14 3/4
ST-T2-32-8 XV #	2-F32T8	93"	4 3/8"	3 7/8"	11 3/4
ST-T3-32-12 XV #	3-F32T8	138"	4 3/8"	3 7/8"	17 3/4
ST-T4-32-16 XV #	4-F32T8	183"	4 3/8"	3 7/8"	22 3/4

Tandem units

