

Features

- Choice of four colors of end caps to match the Aspen wrap and Sconce
- Ceiling or wall mounting
- Spring clips hold lens on housing
- UL Listed

Specifications

- Ballasts are thermally protected class P, non-PCB & UL listed. Electronic ballasts are sound rated A. Multi volt 0° F ballast T8 & T5, -20° F T5HO.
- Housings are formed from cold rolled steel and painted with a high gloss, baked white enamel finish after multi-stage cleaning and a phosphate coating to inhibit rust, has been applied.
- Fixture can be wall or ceiling mounted.
- The 100% Virgin acrylic lens offers a choice of end cap colors to compliment the Aspen Wrap or wall Sconce Series. The lens is held on by spring mounting clips for east maintenance.

Application

- Commercial/residential
- Above mirrors
- Office spaces
- Above counters

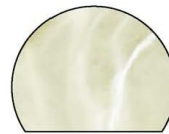
Options

- Dimming
- Dual level wiring
- -20° F T8 120-277v instant start.
- Program start
- LBF (T8 low ballast factor)
- HBF (T8 high ballast factor)

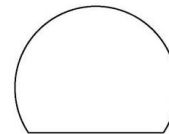


Accessories

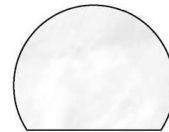
- Chrome or Brass Trim (shown above)



IV-Ivory Marble



SW-Solid White



WM-White Marble



AL-Alabaster

Catalog Number

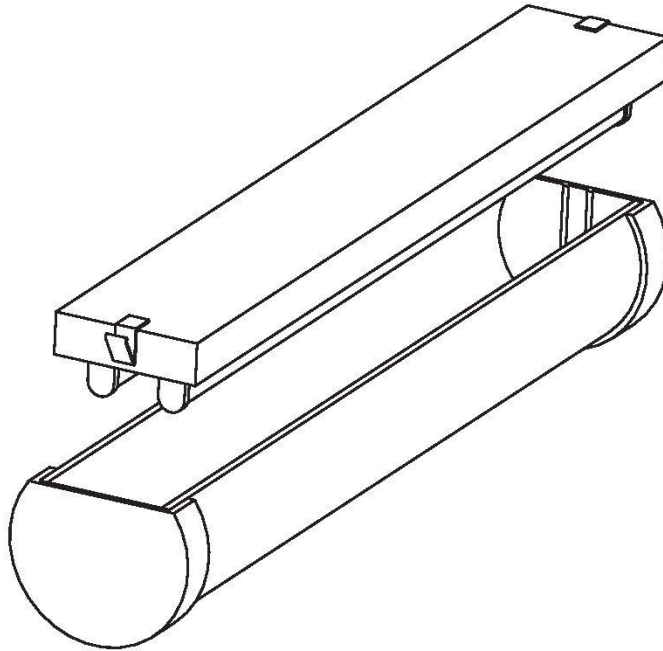
Type

Aspen Bathbar Series

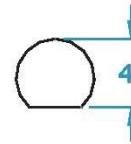
2' 3" & 4" 2 LAMP

Dimensions

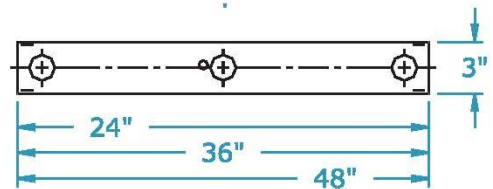
Dimensions & colors are subject to change.
Consult factory for verification.
All configurations/options may not be shown.



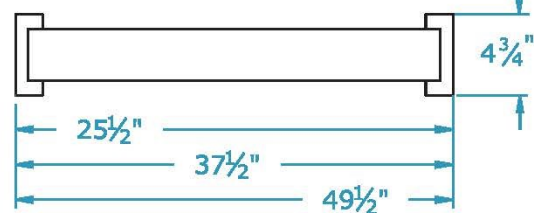
Diffuser Profile



Metal Profile



Back view with diffuser



Ordering Information

Example: ANJ-SW-232 XV

